

# Education Partnership NorthEast

# Our Careers Focused Curriculum Plan

2019-25



# Aims of our curriculum plan

Our curriculum plan is underpinned by our vision of excellence at the heart of everything we do and our professional values. The plan's four aims set out our approach to shaping and evolving a well-designed careers focused curriculum.

To achieve our vision, the curriculum must be ambitious, responsive and future focused to ensure we can deliver excellence for our students, apprentices, employers and our communities.



**Authentic**



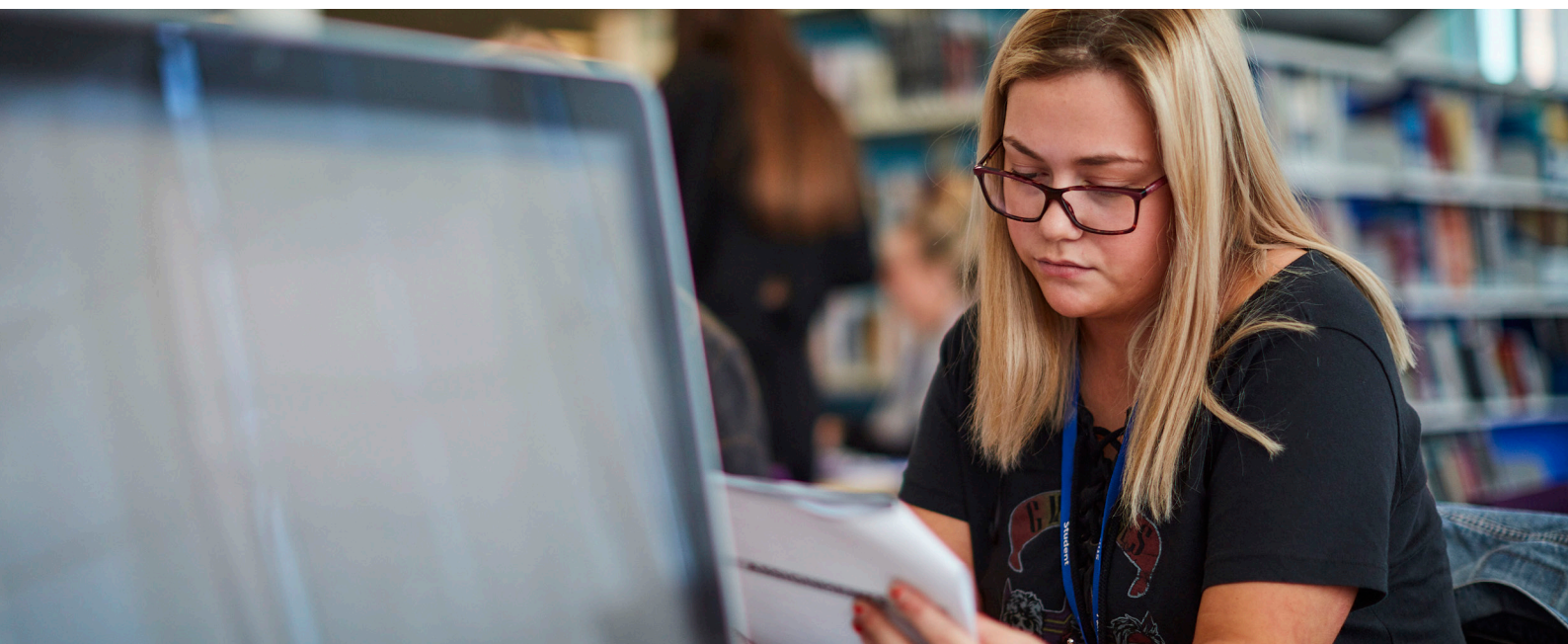
**Respectful**



**Innovative**



**Ambitious**



This curriculum plan strengthens our intention to ensure every student's development of high-quality skills, knowledge and behaviours, relevant to their future learning and career goals.

The HE UK Quality Code highlights how expectations, practices, and advice and guidance fit together, and how each element should be used for our provision to strive for excellence.

“Curriculum is at the heart of education. The curriculum is a framework for setting out the aims of a programme of education, including the knowledge and understanding to be gained at each stage (intent); for translating that framework over time into a structure and narrative, within an institutional context (implementation) and for evaluating what knowledge and understanding students have gained against expectations (impact).”

Ofsted, 2019

# Introduction

**This plan sets out our clear educational intent on developing an ambitious, careers focused curriculum. Our future focused curriculum allows Education Partnership North East and our students to thrive in the ever-changing environment, education and industry in which we operate. The success of the plan will ensure that all our students progress positively in life and their future careers.**

Our teachers' knowledge and understanding of their subject is essential, bringing relevance to their subjects and teaching within stimulating learning spaces.





# Aim

# Innovative

To design and deliver an innovative, quality, careers focused curriculum that supports student and College success.





## We will:

- Deliver our curriculum through a college-wide approach, where teachers select processes and activities that lead to students' deeper, long term learning and are able to apply this learning.
- Create a culture where practitioners are confident to innovate in their teaching, including ownership of their professional development, scholarly activity and research.
- Partner with employers to co-design and co-deliver a curriculum within quality academic and technical pathways including higher technicals.
- Support the development of cross-disciplinary curriculum projects to foster opportunities for students to build confidence and skills through creative and cultural learning.
- Be at the forefront of educational reforms, including delivery of T Levels and Higher Technical qualifications.
- Actively be involved in projects, pilots and applied research to inform curriculum intent and Registered Teacher Status.
- Grow our adult curriculum including training the economically inactive, upskilling and reskilling to ensure lifelong learning for growth and to address labour market opportunities.

# Aim

# Inclusive

Our inclusive curriculum provides clear progression pathways including for the most disadvantaged, to ensure all our students can succeed in life and employment.







## We will:

- Ensure further development of 'career learning' through access to relevant co-curricular activities such as social enterprise, volunteering and employability activities, that are strongly connected to enhance curriculum.
- Enhance provision for students with SEND, ensuring access to a broad and balanced, individualised curriculum.
- Further develop a positive transition Level 2 phase for our 16 to 18-year-old students, to allow progression to Level 3 Technical, Vocational and Academic programmes.
- Ensure our provision for young people Not in Education, Employment or Training has a clear purpose and allows for positive progression and meaningful destinations.
- Empower staff to plan and personalise the curriculum to ensure students achieve their goals and ambitions.
- Develop a curriculum that equips our students with the essential knowledge and cultural capital to succeed.

# Aim

# Relevance

Our curriculum is appropriately informed by market intelligence, responsive and relevant to the key regional and national markets.





## We will:

- › Ensure detailed labour and market intelligence forms the basis of our curriculum planning process for adults, apprenticeships and young people.
- › Grow our apprenticeship and quality higher technical education offer, producing apprentices and graduates with the skills to take advantage of the job market demands and future opportunities.
- › Further strengthen sustainable, mutually beneficial relationships between the College and industry to ensure real-world learning and to meet workforce needs.
- › Strengthen our curriculum specialisms, investing in digital industries, advanced manufacturing and engineering, construction, health and life sciences, visitor economy, land based, finance and business services.
- › Be mindful of the ever-changing external environment and ensure our staff and students are prepared for these changes, including digitalisation, hybrid, environmental developments, task automation and artificial intelligence.

"Colleges will increasingly need to act as an essential service to people and employer in every community, combining high-quality education and skills with access to facilities and resources for lifelong learning."

Independent Commission on the College of the Future, 2019.

# Aim

# Coherent

Our curriculum is meticulously planned and sequenced logically to develop students' long-term knowledge, behaviours and skills development.





## We will:

- ▶ Ensure curriculum planning is prioritised and sustained through distributed leadership, with shared ownership across the college.
- ▶ Ensure curriculum coherence through Education Partnership North East's annual launch of curriculum planning.
- ▶ Develop a curriculum, with clear intent, appropriate implementation and excellent impact, contributing to the social mobility of our students.
- ▶ Continue to provide a dynamic, broad and balanced curriculum with pathways through to higher education and apprenticeships.
- ▶ Approve the higher education strategic approach and framework, prioritising development in higher level technical skills.
- ▶ Positively influence the English, maths and digital skills of our communities.
- ▶ Ensure the ambitious intent of all elements of 16-19 Study Programmes, with clear skills and deeper knowledge development mapped out throughout the schemes of learning.

# Impact

How will we know we have delivered our careers focused curriculum plan?



Impact will be measured and monitored against our Strategic Plan, Goal 1 key performance indicators. We will recognise we genuinely have a career focused curriculum once the 4 aims have been achieved. The plan will be monitored through the Performance Quality and Standards Committee and reported to the Board by the senior lead.





[educationpartnershipne.ac.uk](https://educationpartnershipne.ac.uk)